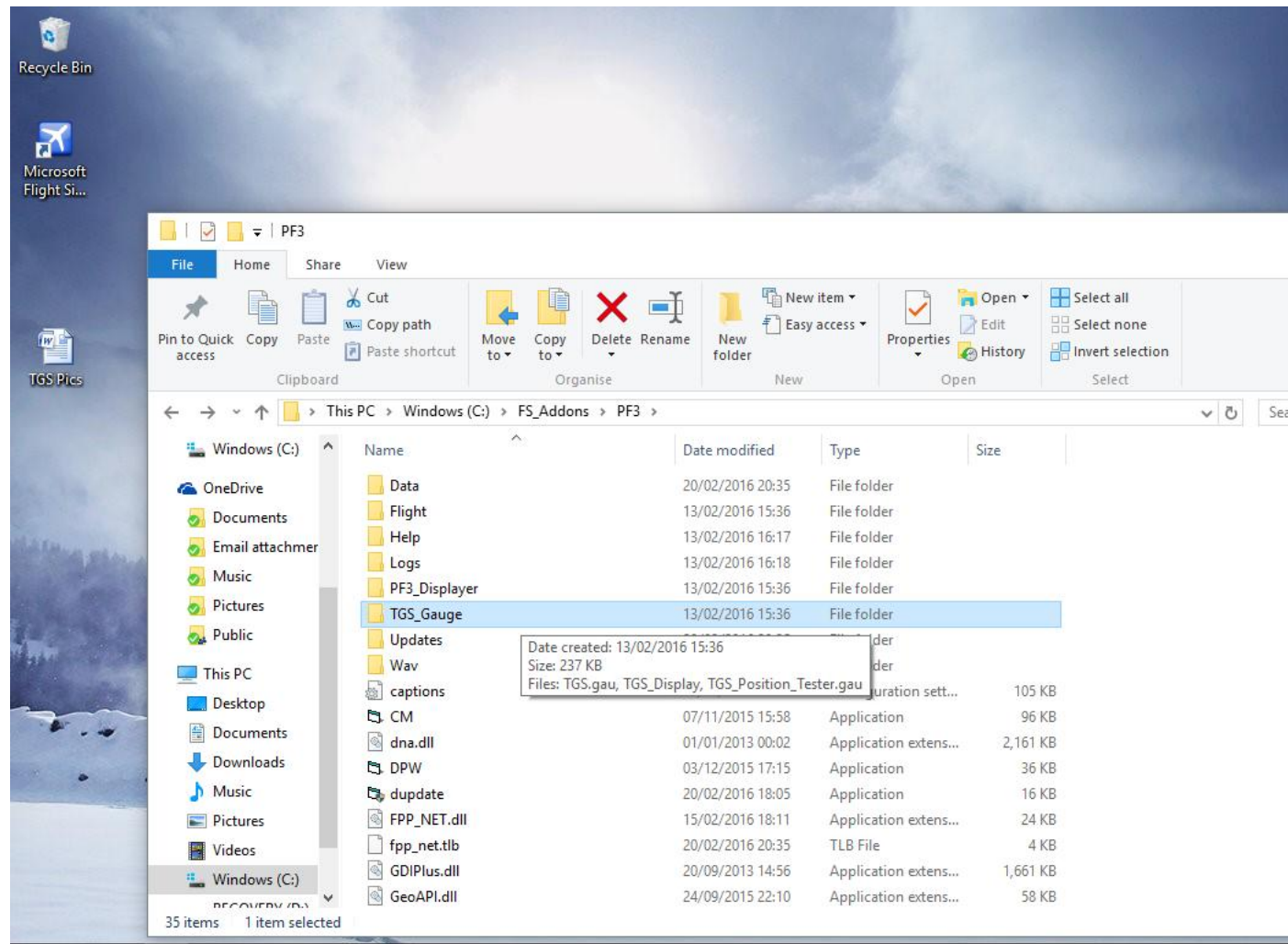


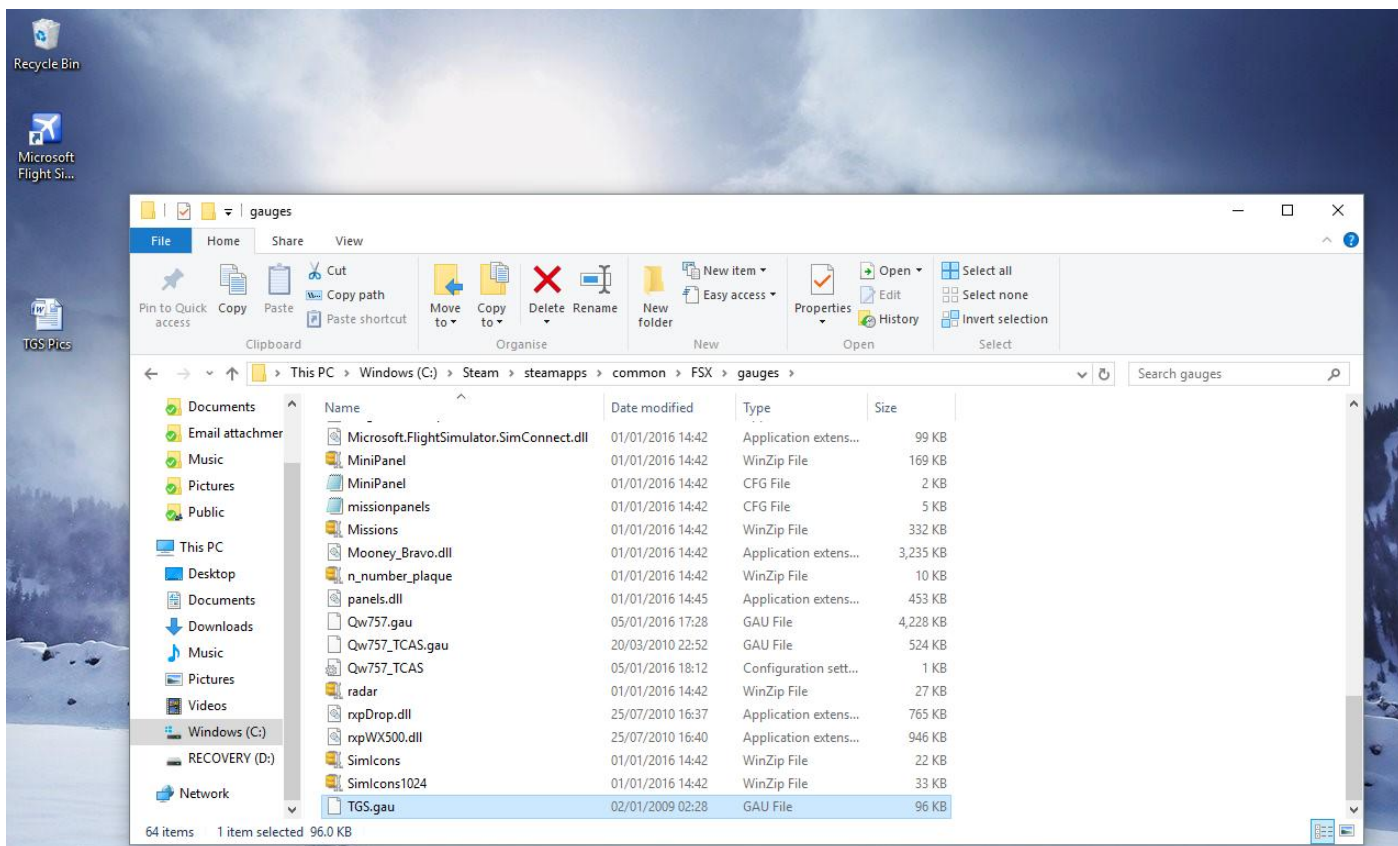
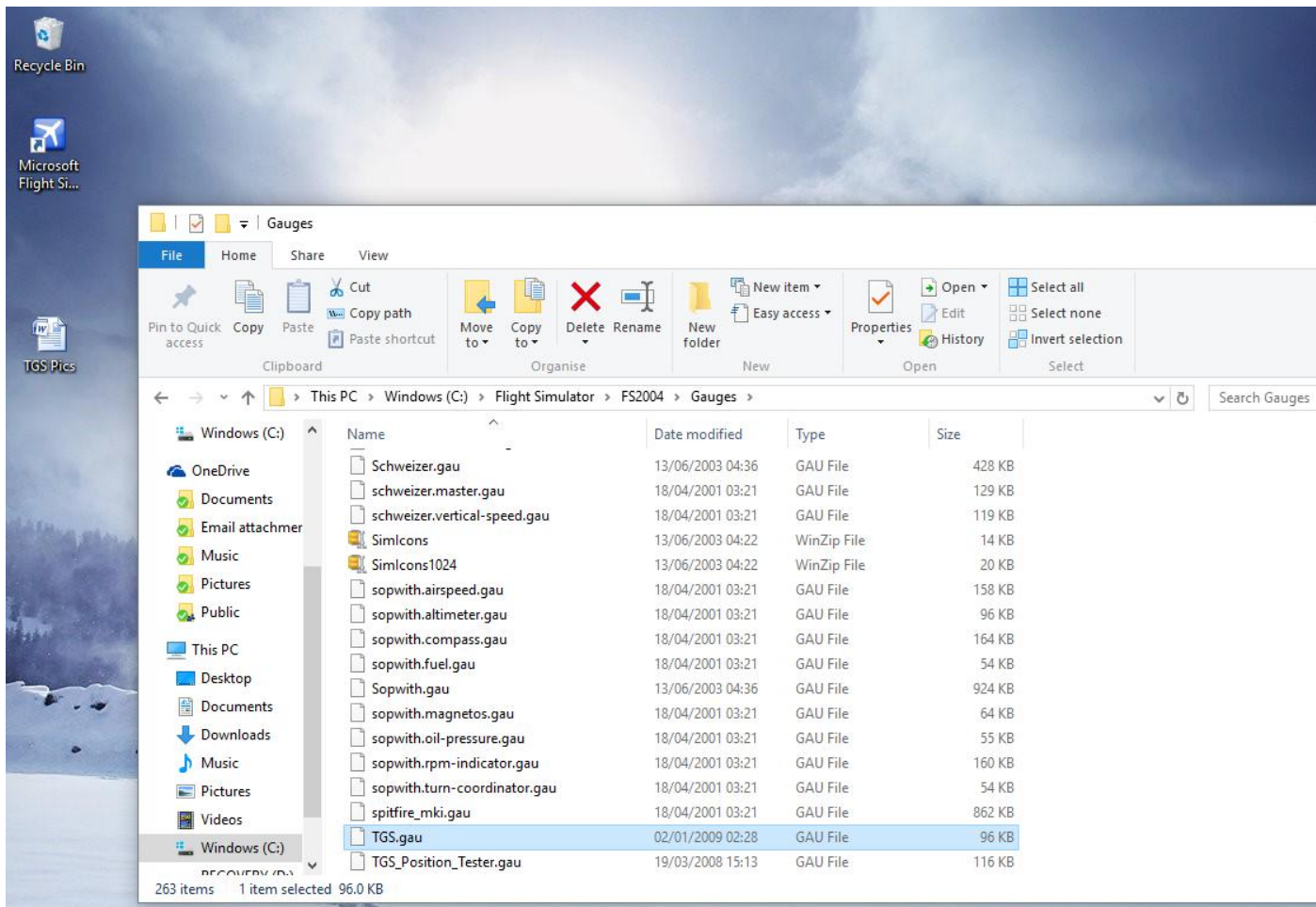
Screenshots of TGS in FS 2004 and FSX/FSX Steam Edition to accompany the TGS Tutorial.

This is the default location of PF3 on my system.....your's could be similar.

Now to locate the gauge...see below



Open folder to reveal TGS.gau and then copy it over to the GAUGES folder in FSX or FS 2004 as shown below on my system, your FS install may differ from mine but the folders stay the same if you haven't changed them!



Manual install as a WINDOW into default Aircraft in FS 2004.

We will use the Cessna 172 for this example.

I recommend and will only be using “Windowed” method for gauge install into FS 2004 default aircraft due to panel layout...



This has installed the gauge as a Window in Cessna 172...I have repositioned it so you can see that it can be moved around the panel without issues, it is installed to the top left hand of the panel.

Manual install as a WINDOW into 3rd Party Aircraft in FS 2004

We will use I-Fly's 737-800 for this example..it has been installed into “Wide Panel” configuration, this is my setup within FS.

The gauge initially installed under the simicons at the top L.H corner, however I moved the gauge to demonstrate how it can get hidden behind the panel..so be careful.



Manual install as a Fixed Gauge into 3rd Party Aircraft in FS 2004

Again using I-Fly's 737-800 we have now installed into the "Aft Overhead" panel.. this way it won't get hidden and you can move this panel or undock if you prefer.

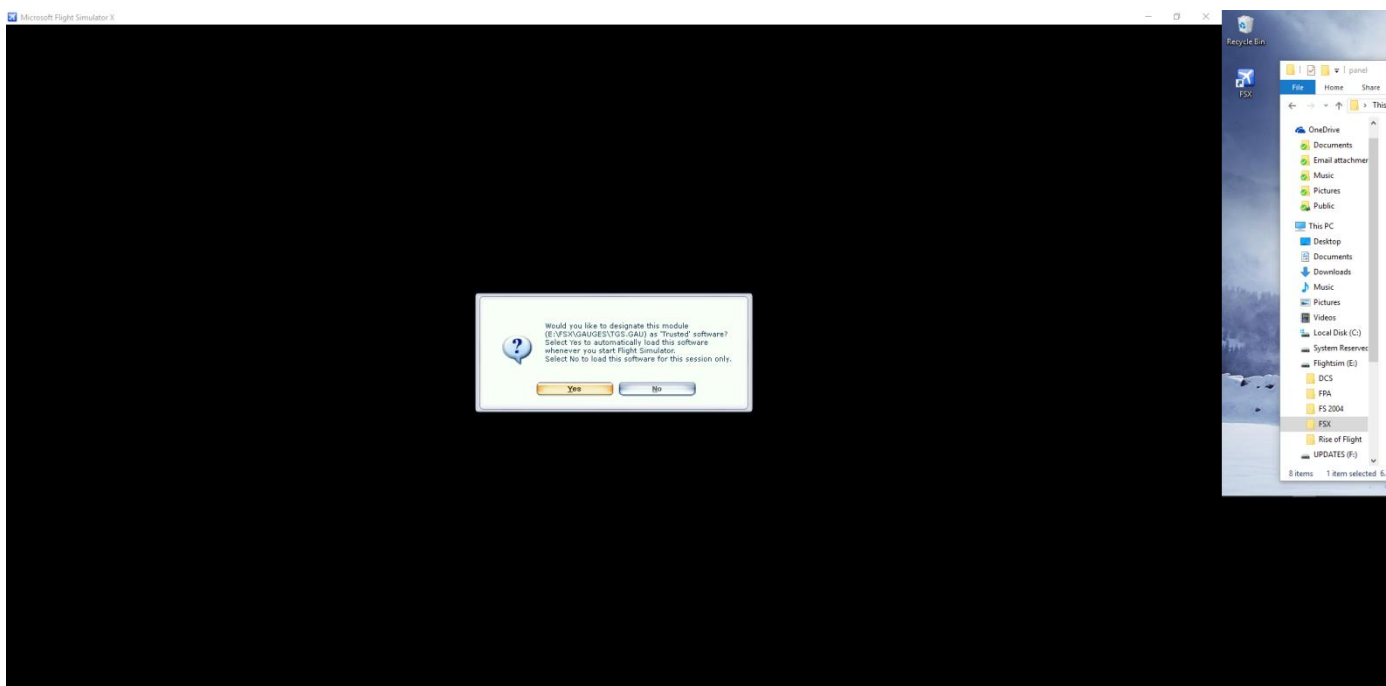


You can resize the gauge by dragging the panel to the bottom enabling you to see out of the glareshield...see below!



Manual install as a WINDOW into default Aircraft in FSX/FSX-Steam Edition.

When you have installed the gauge into FSX/FSX-Steam Edition you will be presented with a message that the TGS gauge has been found and would you trust and also to run it...say "Yes" to both!



Manual install as a WINDOW into default Aircraft in FSX.

We use the default 737-800 for this example.



Initially the gauge is installed to the top L.H corner of the screen as shown here, again you can reposition it so not to get hidden behind the panel.

Please note...there will be no screenshot of a default aircraft in FSX- Steam Edition as the gauge won't show, this is beyond our control..sorry.

As with other 3rd party gauges they won't install either..and I have tried with another 3rd party/payware gauge with no joy!

Just to show I have other 3rd Party aircraft here is Wilco's A380v2 for FSX.

The co-ordinates again have it set at the top L.H corner of the 2D panel as a “Window” this is a window because the panel hid it when trying to install as a “Fixed” gauge...you will need to experiment to see what is best for you.

Again just use the example from other panel.cfg’s to install into various aircraft...the list is endless!



Manual install as a Fixed Gauge into 3rd Party Aircraft in FSX/Steam Edition.

Again we will be using I-Fly’s 737-900 for this and the Aft Overhead panel.

The co-ordinates in the panel.cfg put the gauge at the top L.H corner of the “Aft Overhead” panel.

Again like in FS 2004 you can resize, or dock the panel so to see out of the glareshield.

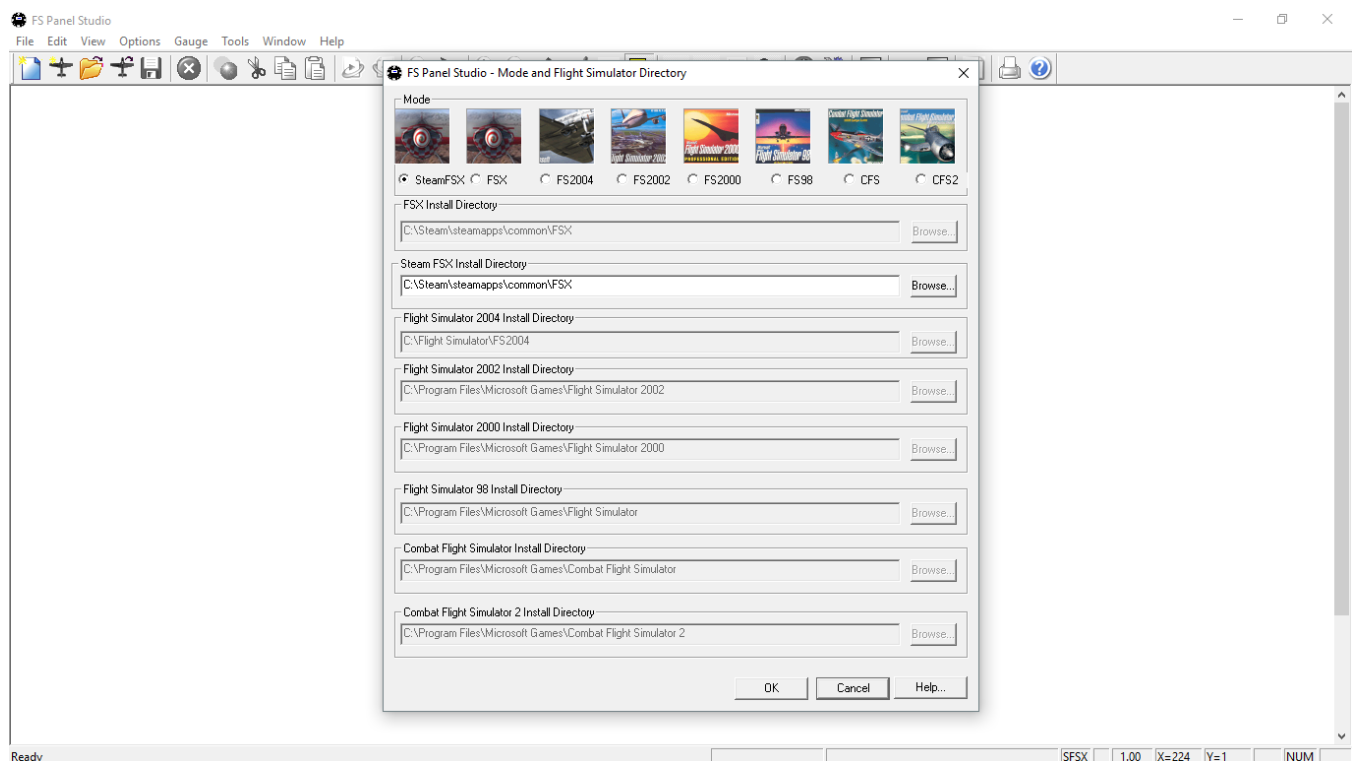
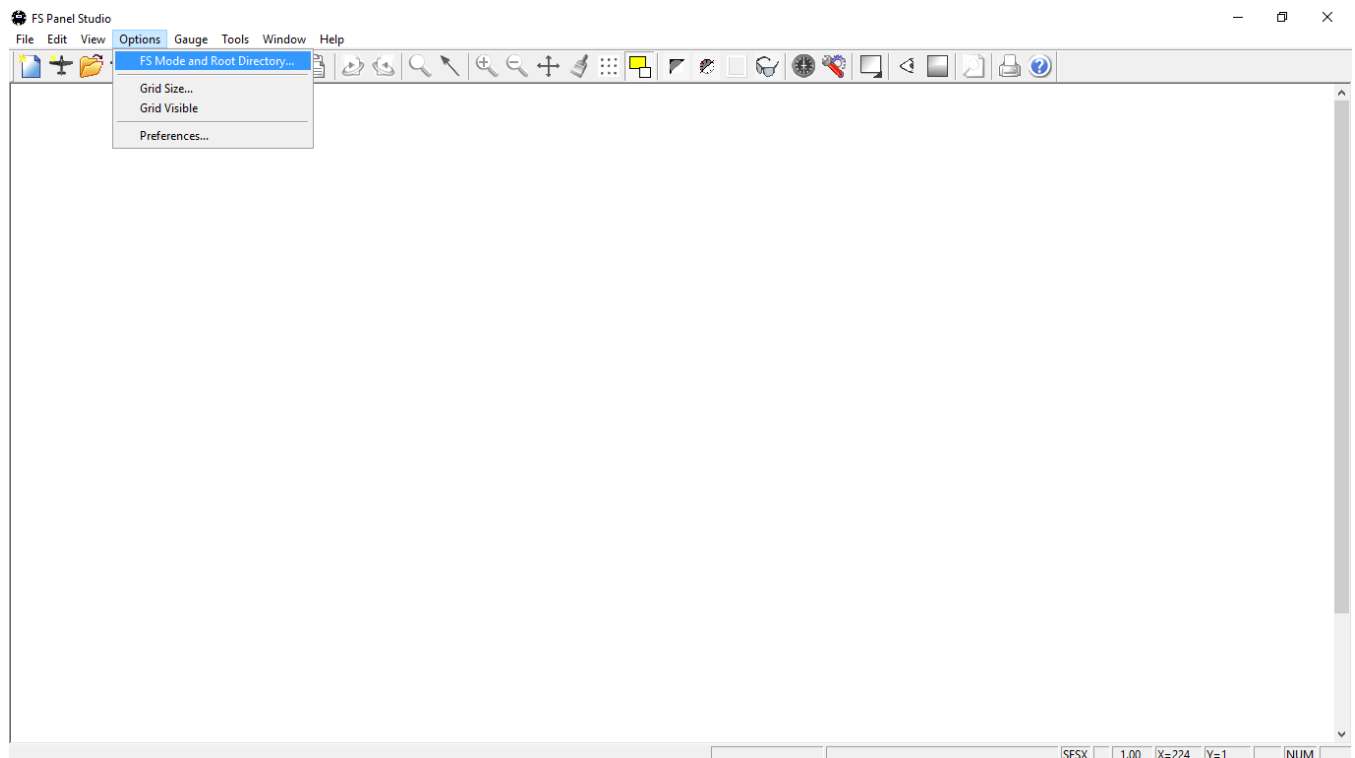


Again you can choose whatever panel you like but be careful not to bleed over other gauges...and a reminder to make a COPY of your panel.cfg.

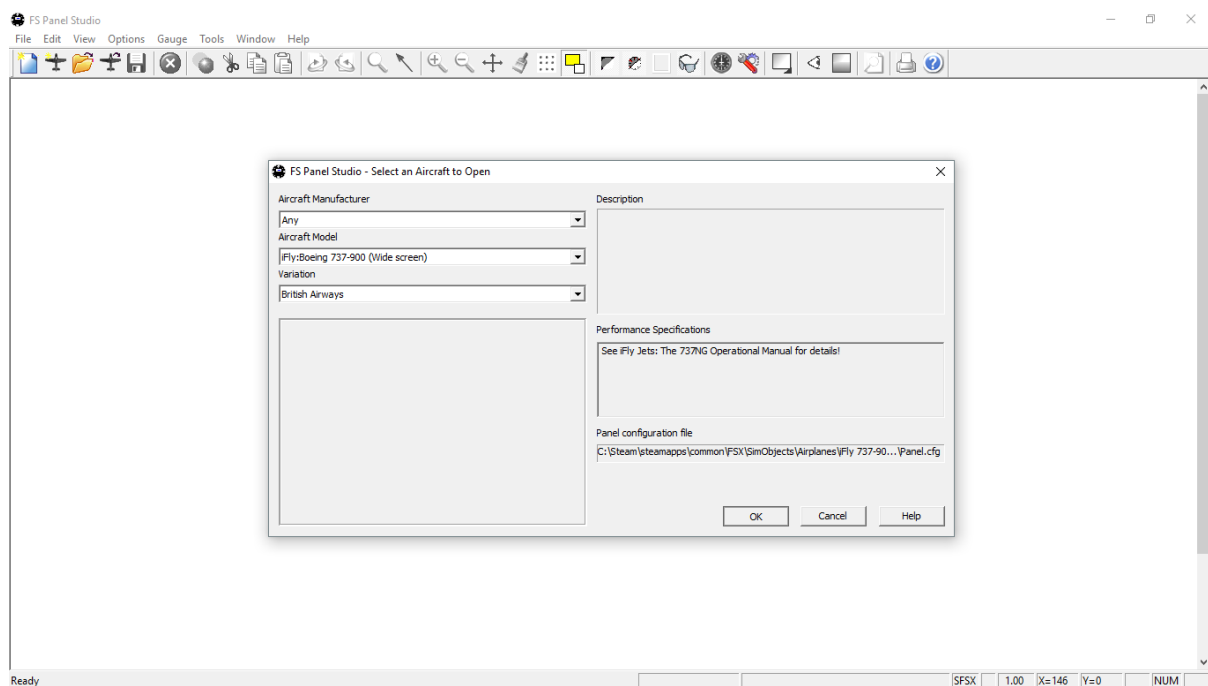
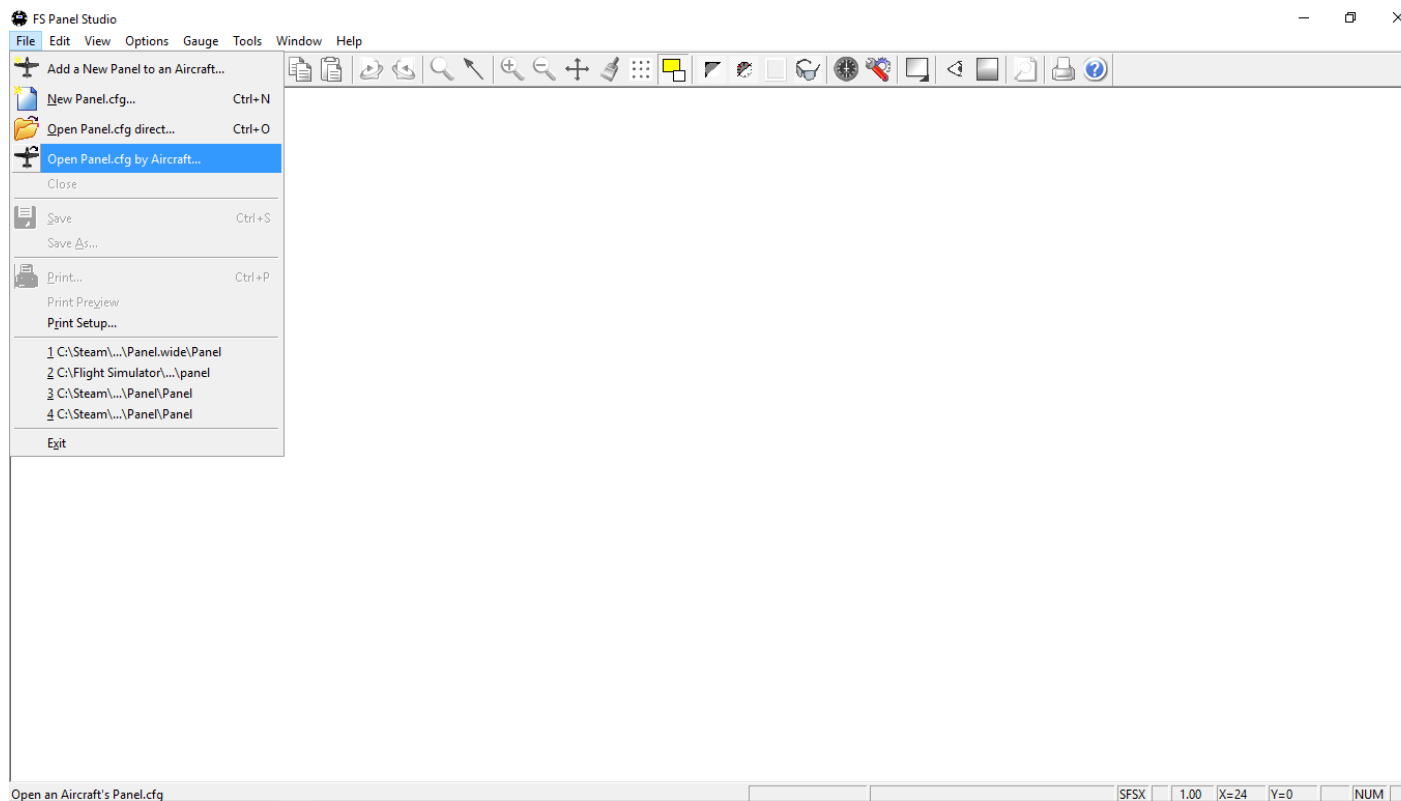
Installing into FS Panel Studio for FSX & FS 2004.

This programme make's installing TGS gauge a breeze, I will show you the basics of how to get the most out of this programme.

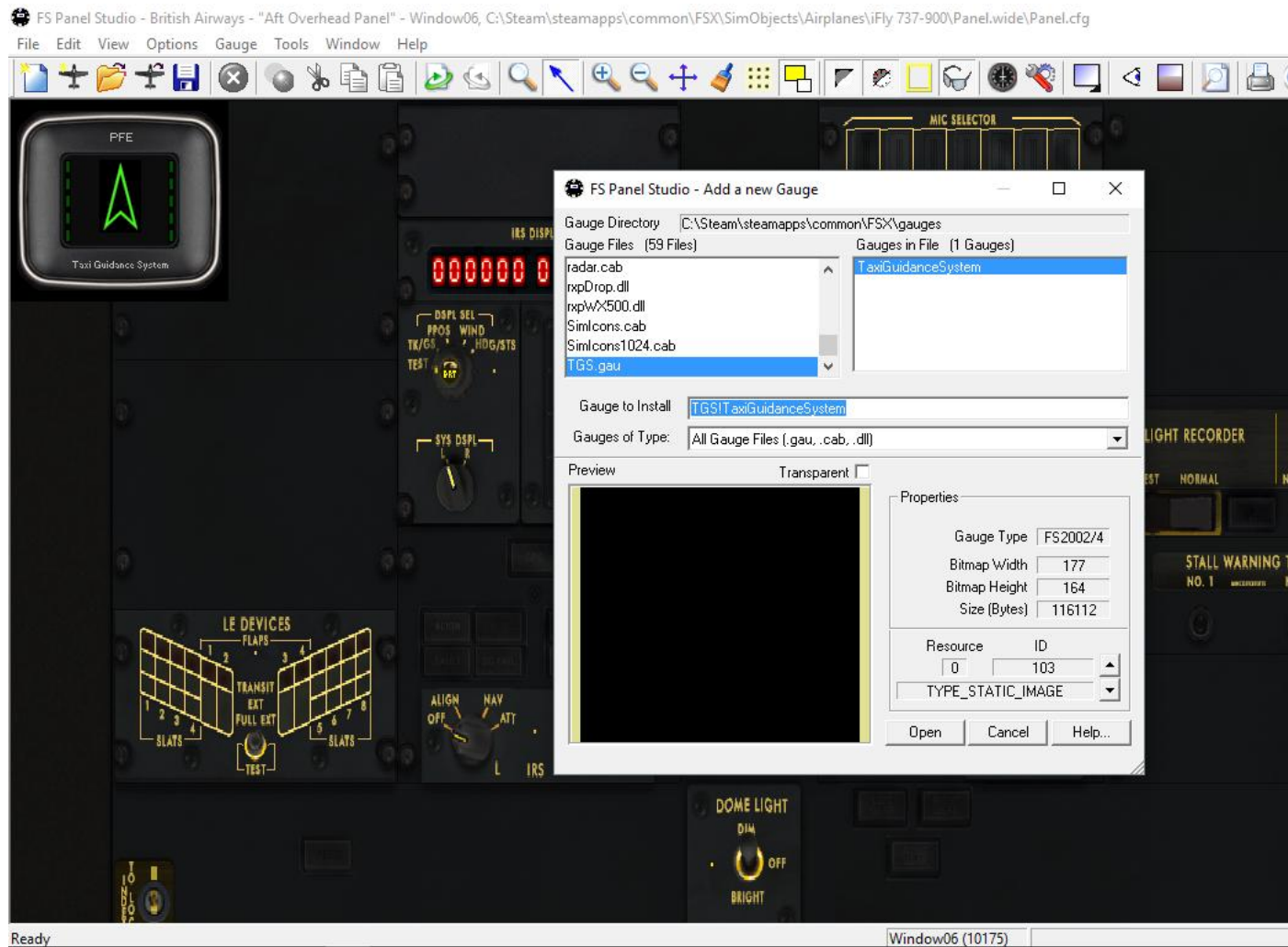
Here goes...firstly you need to select which Sim you intend to install the gauge into, either FS 2004,FSX or FSX/Steam Edition.



Click on File and then open panel by aircraft..and follow directions.



Once you have decided, then locate the TGS gauge...by clicking on add gauge from Gauge in task bar and scrolling down to TGS Gauge and click and highlight it.



Now add the gauge as per installation instructions in the provided documentation in FS Panel Studio.

L.M P3D

No screenshots as the TGS gauge doesn't currently install into P3D, we are looking into this and will update when necessary...thank you for your understanding.

The End.