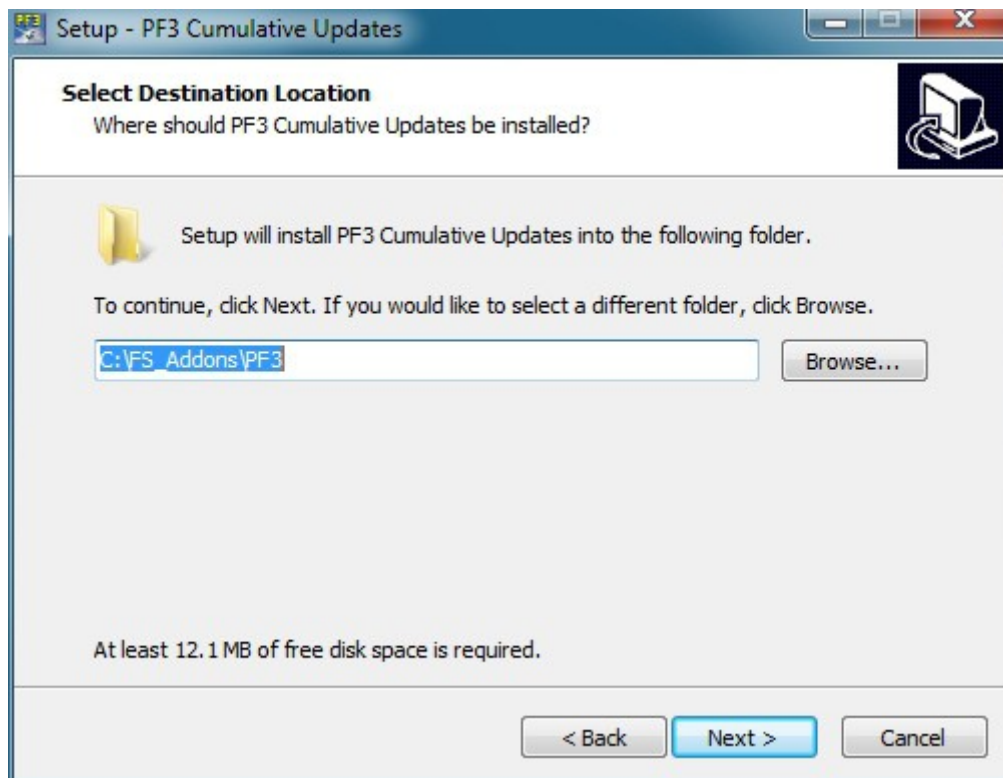
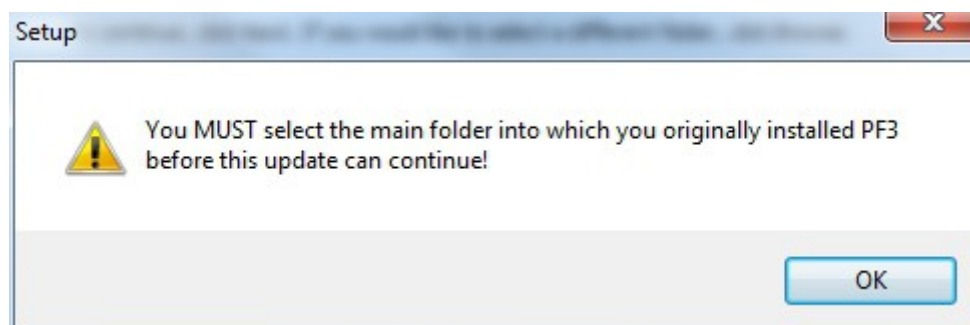


This is a stand-alone cumulative updates package for **PF3 - ATC at its best**. It has been provided for those users experiencing issues when using PF3's built-in auto-updates feature.

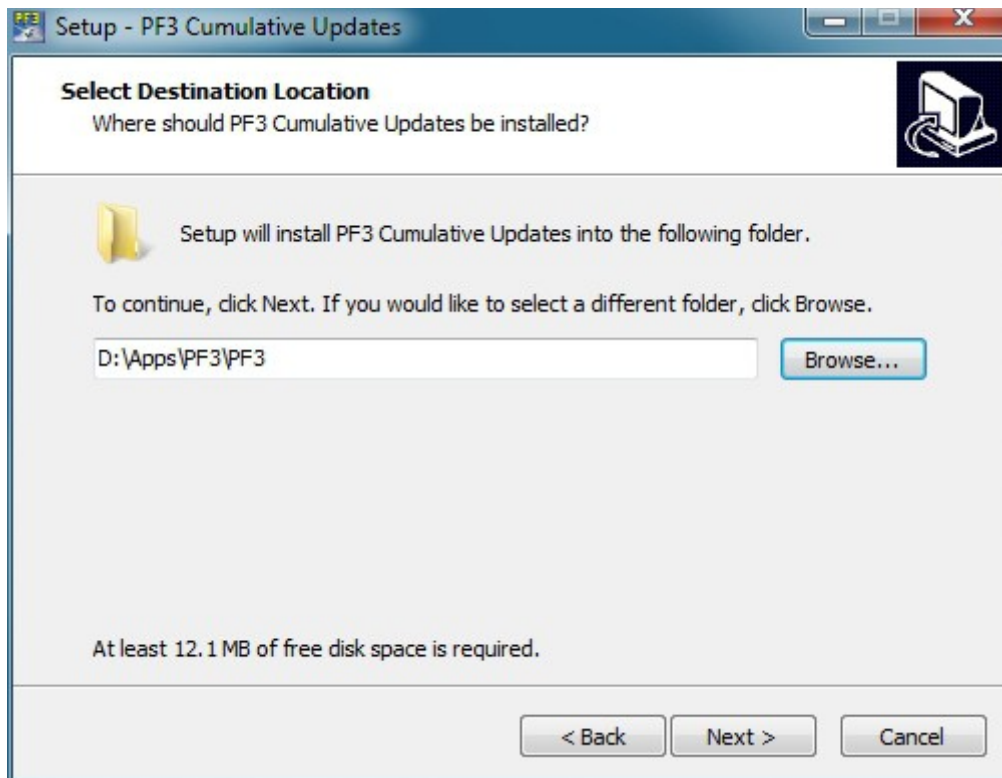
The most important thing to do when running this installation update is to point it to the correct folder, which is the main **PF3** folder into which you initially installed **PF3**. If you originally chose to go with the default location (C:\FS\_Addons\PF3) this will already be shown on the 'Select Destination Location' screen and all you need to do is select the 'Next' button.



If you chose to install **PF3** in a different location you will need to select 'Browse' and navigate to the correct installation folder. For example, let's say you decided to install **PF3** into D:\Apps\PF3, then you should now navigate to [D:\Apps](#) and the installer will automatically append 'PF3' to the path. Don't worry if you get it wrong... for instance, if you actually selected D:\Apps\PF3 and then hit the 'Next' button you would see the following message:-



Then, if you click on 'OK' it will return you to the previous screen and show you the path the installer was going to try and install the updates



As you will see, you selected D:\Apps\PF3 and the installer appended 'PF3' resulting in an incorrect installation path of D:\Apps\PF3\PF3. Fortunately the installer checked and knew this was not the correct folder to install the updates (hence the message).

This is easily rectified simply by removing the last four characters i.e. '\PF3' and then select 'Next'. The installer will then check that folder and if it's correct the process will continue. Alternatively you could select 'Browse' again but this time just navigate to 'D\Apps' and let the installer add '\PF3'.

This package is a cumulative update which can be applied to any version of **PF3** (version 3.0+) and will provide you with the very latest updates for **PF3-ATC at its best.**

On completion you should read the Version History document, which you will find in your PF3\Help folder, to ensure you are fully aware of all the changes/additions now available.